

# CONTACT US FOR A QUOTE

[Home](#)

[About Us](#)

[Products](#)

[Applications](#)

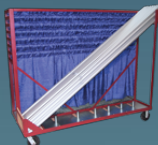
[FAQs](#)

[Site Map](#)



[PRINT PAGE](#)

Components Required	*ADDITIONAL FEET OF BACKWALL										
	50'	100'	200'	300'	400'	500'	600'	700'	800'	900'	1000'
Uprights	6	11	21	31	41	51	61	71	81	91	101
Bases	6	11	21	31	41	51	61	71	81	91	101
Supports	5	10	20	30	40	50	60	70	80	90	100
Drapes	20	40	80	120	160	200	240	280	320	360	400



### PARTY PACKAGE DOLLIES

View our assortment of material handling dollies. All welded steel construction with 1/2" plywood. Steel frame primer coated - ready for paint. Custom dollies are available.



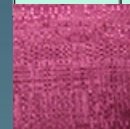
## Backwall Party Packages

**Increase Profits by Offering 8' High Backwalls - Package Comes Complete**

**Includes 8' Uprights, Bases, Drapes and Telescopic Drape Supports (5 examples of usage shown below)**

- It's modular - to expand, just add components as needed\*
- Two package options:  
350 Linear FT of Backwall with Package #15001  
420 Linear FT of Backwall with Package #15011

PKG # 15001	PKG # 15011	Quantity	Part #	Description
<b>PARTY PACKAGE CONTENTS - TWO PACKAGE OPTIONS</b>				
X	X	36 PCS	815	8' X 1-1/2" Standard Uprights
X	X	36 PCS	B1416	14" X 16" Standard Bases
X	X	140 PCS	600002	8' X 4' (94" X 48") Banjo Drape Panels
X		35 PCS	TDS681	6'-8'-10' Telescopic Drape Supports
	X	35 PCS	TDS712	7'-10'-12' Telescopic Drape Supports



### BANJO CLOTH DRAPE

9 Standard Colors  
Flame Resistant

[CLICK HERE](#) for drapery color selection and additional information

**Suggestions for Use with 8FT Components**

[Accessories & Related Items](#)

[ADJUSTABLE UPRIGHTS](#)

[BAG AND LITERATURE HOLDERS](#)

[BASE PLATE ASSEMBLIES](#)

[BOOTHS - STARTER PACKAGES](#)

[CARRY BAGS](#)

[CLIP ROD SUPPORTS](#)

[COMPONENT PARTS](#)

[CURVED DRAPE SUPPORTS](#)

[DRAPERY](#)

[DRAPE SUPPORTS - CROSS BARS](#)

[EASELS, POLE EASELS & CLOTHES TREE](#)

[HANGING COMPONENTS](#)

[MATERIAL HANDLING & STORAGE DOLLIES](#)

[OLD STYLE SCREW-IN UPRIGHTS & BASES](#)

[PIPE AND DRAPE PACKAGES](#)

[REPAIR ITEMS](#)

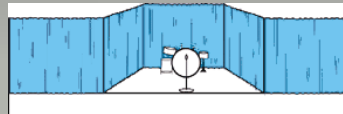
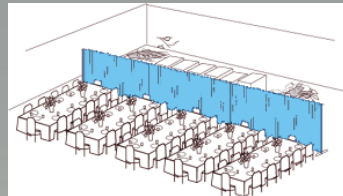
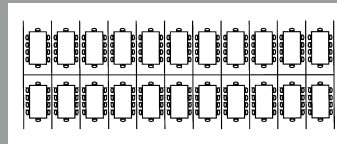
[STANCHIONS & ACCESSORIES](#)

[STANDARD UPRIGHTS](#)

[TABLES AND ACCESSORIES](#)

[TABLE SKIRTS & VINYL TABLE COVERING](#)

[TACBOARD FRAMES](#)



## TWO PACKAGE OPTIONS:

### PACKAGE #15001 - 350 Linear FT of Backwall

#### 9 - SINGLE AREA PARTITIONS - 3 OPTIONS

- 1) 10'D X 10'W X 8'H - 3 SIDED
- 2) 8'D X 10'W X 8'H - 3 SIDED
- 3) 8'D X 8'W X 8'H - 3 SIDED

- OR -

#### 16 - "IN-LINE" AREA PARTITIONS - 3 OPTIONS

- 1) 10'D X 10'W X 8'H - 3 SIDED
- 2) 8'D X 10'W X 8'H - 3 SIDED
- 3) 8'D X 8'W X 8'H - 3 SIDED

- OR -

#### 22 - "BACK-TO-BACK" AREA PARTITIONS 3 OPTIONS

- 1) 10'D X 10'W X 8'H - 3 SIDED
- 2) 8'D X 10'W X 8'H - 3 SIDED
- 3) 8'D X 8'W X 8'H - 3 SIDED

- OR -

#### CONCEAL UNSIGHTLY ITEMS OR WALLS

- OR -

#### MAKE BANDSTAND BACKDROPS

PACKAGE #15011 - 420 Linear FT of Backwall  
THIS PACKAGE WILL YIELD SAME CONFIGURATIONS  
AS ABOVE - MAXIMUM 12' WIDE

**Backwall Party Packages**

[Back to Top](#)

ALSO SEE:

[STARTER PACKAGES](#)

[PIPE AND DRAPE PACKAGES](#)

[SINGLE/FREESTANDING BOOTHS](#)

[IN-LINE BOOTHS](#)

[BACK-TO-BACK BOOTHS](#)

[BACKWALL COMPONENTS](#)

[Request a Catalog](#)

[Contact Innovative 1.800.400.0047 Toll Free USA & Canada](#)

[info@innovative-sys.com](mailto:info@innovative-sys.com)

2068 E. Gladwick Street • Compton CA 90220