

CONTACT US FOR A QUOTE

[Home](#)

[About Us](#)

[Products](#)

[Applications](#)

[FAQs](#)

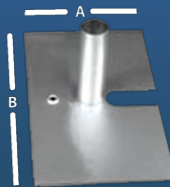
[Site Map](#)



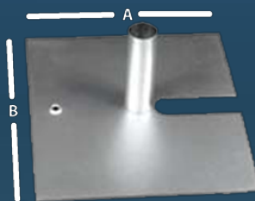
Base Assemblies - Low Profile

Features:

- Low profile design minimizes risk of tripping
- Stacking slots reduce storage space needed
- Extra pin holes can be drilled to your specifications for an additional cost
- All steel base plates are zinc plated for rust protection and long life
- Special order black coated available

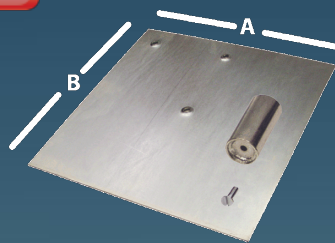


8" X 14"
Our smallest base plate - comes with **2 Pin Holes and Stacking Slot**. Additional Pin Holes available for an additional cost.



14" X 16" come with **2 Pin Holes and Stacking Slot**. Additional Pin Holes available for an additional cost.

[PRINT PAGE](#)



18" X 18" or **24" X 24"** come with **3 Pin Holes**. Stacking and/or Handle Slots, Additional Pin Holes available for an additional cost.

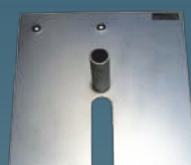
Contact us for lead time on black finish items



Black Coated



Optional Handle Slot



Optional Stacking Slot

Accessories & Related Items

ADJUSTABLE UPRIGHTS

SILVER PART #	SPECIAL ORDER BLACK PART #	"A"	"B"	THICK	WEIGHT	RECOMMENDED UPRIGHT SIZE	PART #	SUGGESTED PIN SIZE
BASE PLATE ASSEMBLIES (INCLUDES PIN AND SCREW ASSEMBLY)								
B814	B814-BK	8"	14"	3/16"	6 LBS	3' - 1.5" O.D. 3' - 2" O.D.	315 320	1.5" X 3.5" 2" X 4"
B1416	B1416-BK	14"	16"	3/16"	12 LBS	6' - 1.5" O.D. 6' - 2" O.D. 8' - 1.5" O.D. 8' - 2" O.D.	615 620 815 820	1.5" X 3.5" 2" X 4" 1.5" X 3.5" 2" X 4"
B1818	B1818-BK	18"	18"	3/16"	17.5 LBS	10' - 1.5" O.D. 10' - 2" O.D. 12' - 1.5" O.D. 12' - 2" O.D.	1015 1020 1215 1220	2" X 4"
B181838	B181838-BK	18"	18"	3/8"	35 LBS	UP TO 16'		2" X 6"
B2424	B2424-BK	24"	24"	3/16"	31 LBS	UP TO 18'		2" X 8"
B242438	B242438-BK	24"	24"	3/8"	62 LBS	UP TO 24'		2" X 8" OR 2" X 16"
BASE PLATE ASSEMBLIES - OPTIONAL ADD-ONS								
B1818-HS	B1818-BKHS	(same as B1818 above) with Handle Slot						
B1818-SS	B1818-BKSS	(same as B1818 above) with Stacking Slot						
B181838-HS	B181838-BKHS	(same as B181838 above) with Handle Slot						
B181838-SS	B181838-BKSS	(same as B181838 above) with Stacking Slot						
B2424-HS	B2424-BKHS	(same as B2424 above) with Handle Slot						

[BAG AND LITERATURE HOLDERS](#)

[BOOTHS - STARTER PACKAGE](#)

[BACKWALL - PARTY PACKAGE](#)

[CARRY BAGS](#)

[CLIP ROD SUPPORTS](#)

[COMPONENT PARTS](#)

[CURVED DRAPE SUPPORTS & COLUMN COVERS](#)

[DRAPERY](#)

[DRAPE SUPPORTS-CROSS BARS\(Telescopic & Solid\)](#)

[EASELS, POLE EASELS & CLOTHES TREE](#)

[HANGING COMPONENTS](#)

[MATERIAL HANDLING & STORAGE DOLLIES](#)

[OLD SYLTYE SCREW-IN UPRIGHTS & BASES](#)

[PIPE AND DRAPE PACKAGES & QUANTITY CHARTS](#)

[REPAIR ITEMS](#)

[SIGN HOLDERS](#)

[STANCHIONS - ROPES, BELTS, CHAIN & ACCESSORIES](#)

[STANDARD UPRIGHTS](#)

[TABLES AND ACCESSORIES](#)

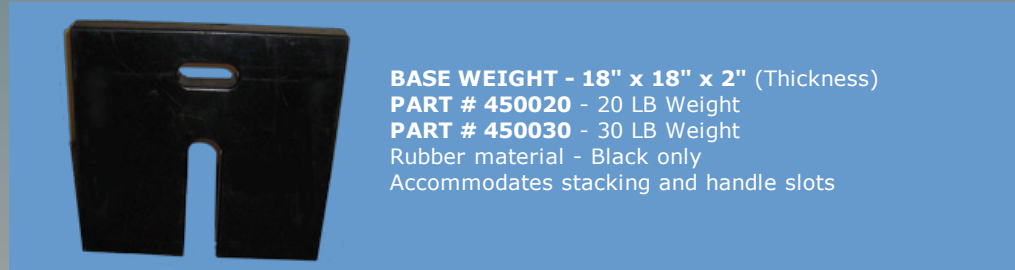
[TABLE SKIRTS](#)

[TACBOARD FRAMES](#)

[VINYL TABLE COVERING](#)

B2424-SS	B2424-BKSS	(same as B2424 above) with Stacking Slot
B242438-HS	B242438-BKHS	(same as B242438 above) with Handle Slot
B242438-SS	B242438-BKSS	(same as B242438 above) with Stacking Slot

All Adjustable Uprights require 2" O.D. Pin.
Standard Non-Adjustable Uprights - Pin size depends on Model.



Base Assemblies

[Back to Top](#)



[Request a Catalog](#)

[Contact Innovative 1.800.400.0047 Toll Free USA & Canada](#)

info@innovative-sys.com

2068 E. Gladwick Street • Compton CA 90220